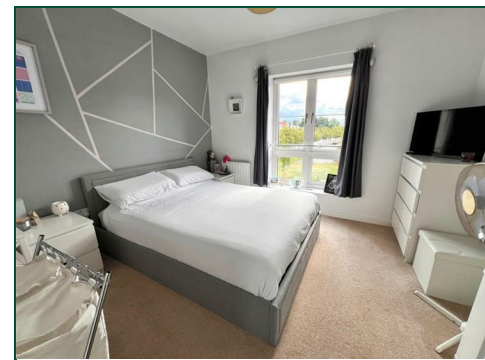




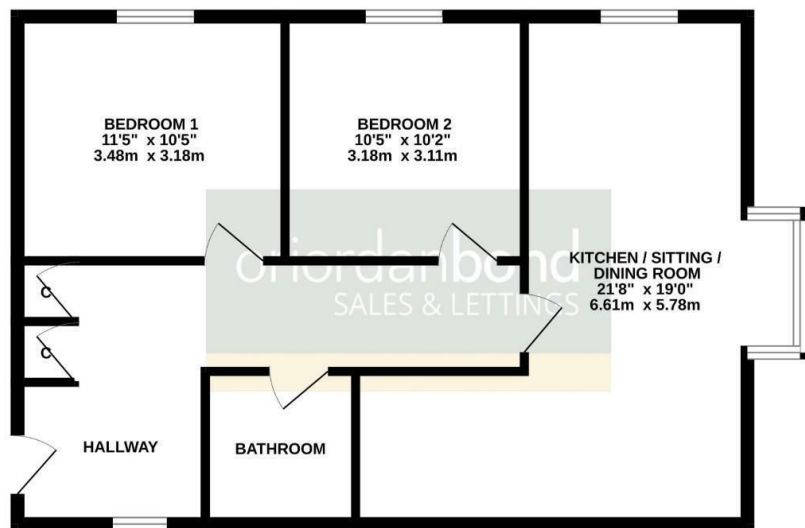
Weedon Close

St Crispin, Northampton

oriordanbond
SALES & LETTINGS



GROUND FLOOR
689 sq.ft. (64.0 sq.m.) approx.



TOTAL FLOOR AREA : 689 sq.ft. (64.0 sq.m.) approx.
Whilst every attempt has been made to ensure the accuracy of the floorplan contained here, measurements of doors, windows, rooms and any other items are approximate and no responsibility is taken for any error, omission or mis-statement. This plan is for illustrative purposes only and should be used as such by any prospective purchaser. The services, systems and appliances shown have not been tested and no guarantee as to their operability or efficiency can be given.
Made with Metagix C0223

Weedon Close

St Crispin

NN5 4WP

25% SHARED OWNERSHIP £50,000

A well presented two bedroom apartment offered for sale on a 25% shared ownership basis. Set on the top floor in the block, the property would make an ideal purchase for first time buyers and is located in the desirable area of St. Crispin.

The accommodation comprises entrance hall, open plan kitchen/sitting/dining room, two double bedrooms and a three-piece bathroom suite. The property benefits from gas radiator heating, uPVC double glazing, a secure intercom entry system and two allocated parking spaces.

Leasehold Information: Lease Remaining - 92 years (as of 2025) / Rent & Service charge all together - £403 per month

Additional information

- Council Tax Band: C
- Energy Efficiency Rating: B

Viewing

Viewing strictly by appointment – details below

Disclaimer

O'Riordan Bond Estate Agents Limited has not tested apparatus, equipment, fittings or services and so cannot verify they are in working order. The buyer is advised to obtain verification from their solicitor or surveyor.

O'Riordan Bond Duston Sales

01604 589007

duston@oriordanbond.co.uk

